

# FlowProfessor™ Calibration System

The best solution for accurate low level EPA TO-15 monitoring.



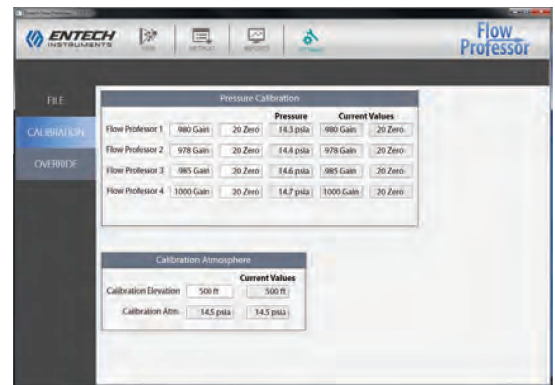
FlowProfessor™ shown with CS1200ES and 6L Silonite™ canister.

Introducing the all-new FlowProfessor™, the easiest and most accurate way to calibrate your Entech CS1200E field samplers. Using the latest CS1200E technology updated in 2014, the FlowProfessor™ automates the complete calibration process for sampling into canisters as small as 450mL and as large as 15L. From within the easy to navigate FlowProfessor™ software, simply set canister size, sampling duration, and the remaining canister vacuum desired at the conclusion of sampling (typically 2"Hg); then attach the FlowProfessor™ to the front of the CS1200E and select **Start Calibration** from the software menu. The FlowProfessor™ system proceeds to automatically adjust the flow setting of the CS1200E to obtain the ideal flow rate – every time. The sophisticated software also adjusts for estimated field temperatures and sampling site elevation to optimize sampling rates for even the most challenging environmental conditions. Attempting to achieve such precise calculations and flow controller adjustments manually would be difficult and time consuming at best. The FlowProfessor™ makes it all easy!

The CS1200E features fantastic low-flow stability, and accurate sampling for a 6L canister can be set from 1 hour to a full 2 weeks. Can you imagine doing continuous monitoring at a field location and only collecting 2 samples a month? Now that process is easily automated with the FlowProfessor™. Even the quality of the restrictor and diaphragm are verified to ensure consistent flow rates. Generate a calibration report for easy long-term reference and send the CS1200E out to the field in Entech's new shipping boxes that perfectly protect both the canister and CS1200E flow controller in a single compact package.

The FlowProfessor™ + CS1200E + Silonite™ Sampling Canister = Your Secret to Success. A winning combination for today's modern air laboratory.

DESCRIPTION	PART #	UNIT
<b>FlowProfessor™</b> (CS1200E Calibration System)	39-FP-02	EA



Calibrate up to four CS1200E's at the same time!